



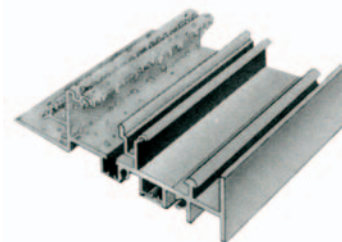
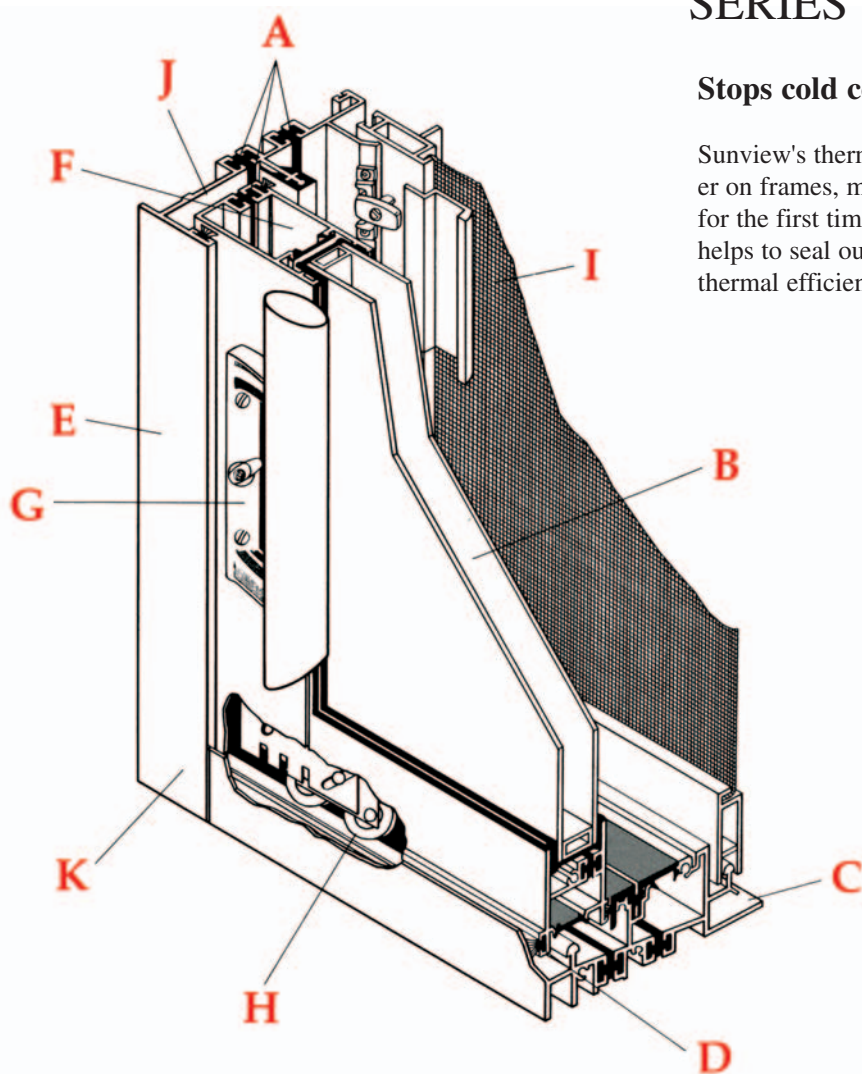
**Sunview**

**THERMO-GUARD SLIDING DOOR**

# SERIES 1200 THERMO-GUARD

## Stops cold cold

Sunview's thermal barrier on panels and double thermal barrier on frames, minimizes heat flow & condensation... for the first time gives aluminum the warmth of wood. It helps to seal out cold and noise. It provides a level of thermal efficiency required with today's rising energy costs.



## Thermo-Guard The Energy Saver

**A. DOUBLE THERMAL BARRIER** - double structural thermal barrier in all frame sections — minimizes heat flow and condensation.

**B. INSULATING GLASS** - full 1" tempered sealed insulating glass with a 5/8" air space - two and one half times the insulating air space of 1/4" conventional door sealed insulating glass.

**C. POSITIVE DRAINING** - unique tube sill construction - positive drainage with baffled weeps.

**D. WEATHERPROOF** - full perimeter double/in seal weather stripping.

**E. EASY TO INSTALL** - extra deep baffle jambs assure perfect operation, even in out-of-square installations.

**F. MAXIMUM STRENGTH** - unique telescoping interlocking comers, tubular jamb, head and sill prevent twisting, bowing and out-of-square panels.

**G. HARDWARE** - maximum security hardware set positive latching, fully adjustable with custom wood grain handle. Safety latch cannot be accidentally broken. Position Security lock double locks the door in a fully dosed position and also locks it in a 5" open position.

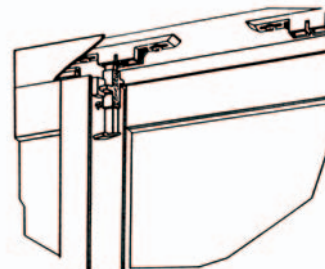
**H. EASY OPERATION** - Doors roll quietly on adjustable tandem, sealed, steel ball bearing roller assemblies. Fully adjustable without removing panels.

**L. INSECT PROTECTION** - screen panel rides easily on top and bottom steel rollers. Screen interlock with fixed panel interlock to form complete seal.

**J. REVERSIBILITY** - two panel door fully reversible even after installation. Simplifies inventory and eliminates builder handling worries.

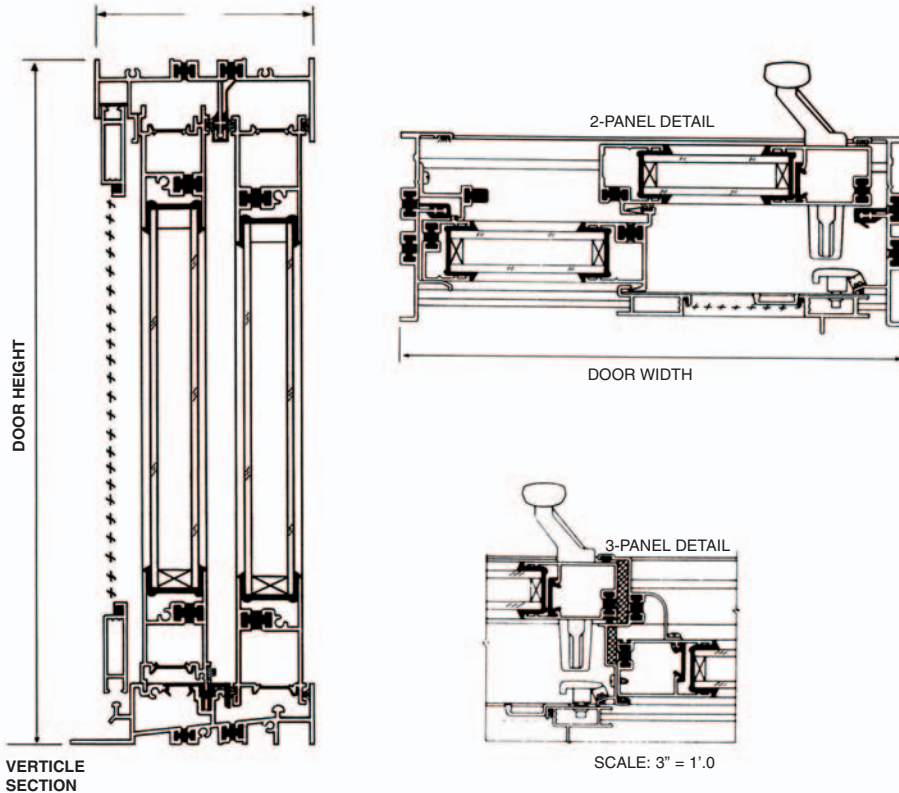
**K. PAINTED FINISH** - electrostatic baked-on brown or white enamel paint finish.

Even when subjected to dry ice induced cold and frost at 110° below, the Series 1200 double thermal break stops cold from penetrating to the interior.



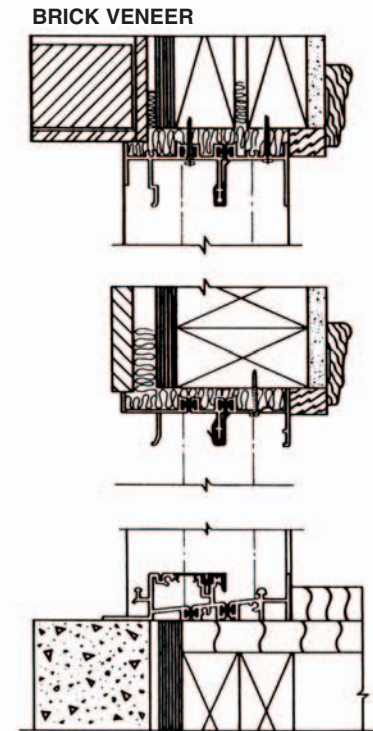
Security and Position Lock is optional on all Series 1200 Thermo-Guard. This unique positive action lock provides anti-burglary protection. It double-locks the door in a fully closed position and also locks it in a 5-inch open position for ventilation.

## Door Croos Section



## Insatallation details

SCALE: 3" = 1'-0



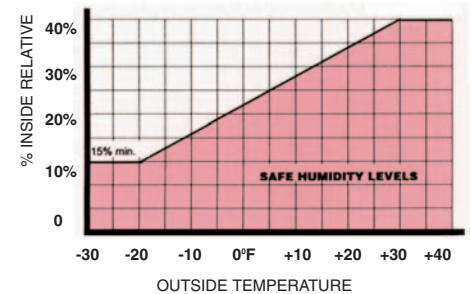
## Series 1200 Test Data

The following are the test results of a current test of a 6' x 6'8" unit, tested at a Wamock Hersey Testing Laboratory. The unit that has been tested meets or exceeds CAN/CGSB-82.1-M89 specification and no representation as to air infiltration is made except to the model tested.

CAN/CGSB 82-1-M89 Test	Minimum Requirement Allowed	Rating	Thermo-Guard Measured	Result Rating	% Above Min Specs	
Moving	110N		44N		60%	
Starting	175N		93N		47%	
Air Infiltration 1.56 psf at 75 Pa. (25mph wind)	2.79(m <sup>3</sup> /h)m <sup>-1</sup>	A1	1.3(m <sup>3</sup> /h)m <sup>-1</sup>	A2	53%	
Water Resistance	137 Pa (2.86 psf) No Overview	B1	200 Pa (4.16 psf) No Overview	B2 (Available) B3 B4	45%	
Wind Load Resistance	To Deflection	0.50 K Pa (10.4 psf) Wind Load wind	C1	1.0 K Pa (20.8 psf) (64.5 mph) wind	C3	Min. 100% (91.3 mph)
	To Blow-Out	1.50 K Pa (31.2 psf) (111.8 mph wind) No Deformation	C1	2.5 K Pa (52.2 psf) (144 mph wind) No Deformation	C3	Min. 67%
Forced Entry Resistance	Grade 10 No Entry	F1	Grade 10 No Entry	F1		
Thermal Break Condensation Resistance	Data Supplied On Request	D1	Data Supplied On Request	D1		

## Series 1200 Data (SDG-C30)

Maximum Recommended Humidity Levels



Based on engineering studies conducted at the University of Minnesota Laboratories.

Higher humidity levels can allow water vapor to pass through walls and condense in insulation, tend to cause exterior paint failure and could cause roof sheathing to buckle.

## Specifications

**GENERAL:** Aluminum horizontal sliding doors shown on plans and in specifications shall be as manufactured by Sunview Doors Limited.

**MATERIAL & CONSTRUCTION:** Door units shall be constructed from specially designed heavy gauge, extruded sections of 6063T5 tempered aluminum alloy, split with a structural double thermal break in accordance with Sunview engineering standards drawings.

**FRAME:** Consists of head channel track, sloped sill track, jamb track. Corner of frame jointed by two large diameter screws fastened into integral extruded strengthening ribs in jamb section. Special designed tube sill with concealed drainage system.

**SASH:** Styles and rails constructed of heavy extruded tubular section. Panel jambs machined to overlap and interlock with head and sill and joined by screws fastened into extruded bosses in panel head and sill. All two-panel units reversible before or after installation.

**WEATHERSTRIPPING:** Sliding panel double weather-stripped with polypropylene pile with a Mylar fin seal running down the centre of the pile to form a double perimeter seal. Complete perimeter of fixed panel sealed with vinyl weatherstripping.

**HARDWARE:** Positive action, heavy-duty security latch, safety activated to eliminate keeper breakage. High impact diecast with baked aluminum finish and custom wood-grain handle. Two-way adjustable steel keeper. Bumper stop for all sliding panels. Sliding panels equipped with two steel cadmium-plated tandem ball bearing, weather-sealed adjustable rollers at bottom (four wheels per panel). All screws self-tapping, either plated or stainless steel. High-impact diecast position and security lock optional — double-locks door in a full locked position and also in 5" open position. Cylinder lock available as an optional extra.

**FINISH:** Aluminum section pre-treated with a special five-stage chromate undercoating, then painted with an electrostatic baked-on brown or white enamel paint finish. Frame sill mill finish.

**SCREEN:** Frames of tubular aluminum extrusions fitted with 18 x 14 mesh reversible fiberglass insect screen cloth held by vinyl spline. Spring-loaded rollers with end adjustment screws mounted on each end of the head and sill rails. Positive action spring bolt lock, extruded inside handle and an integral extruded outside pull. Screen meeting rail jamb provided with extruded interlock to interlock with fixed panel meeting rail. Screens shall be furnished by the manufacturer at extra cost.

**GLAZING:** Nominal 1" tempered sealed insulating glass with insulating air space between lites of tempered safety glass.

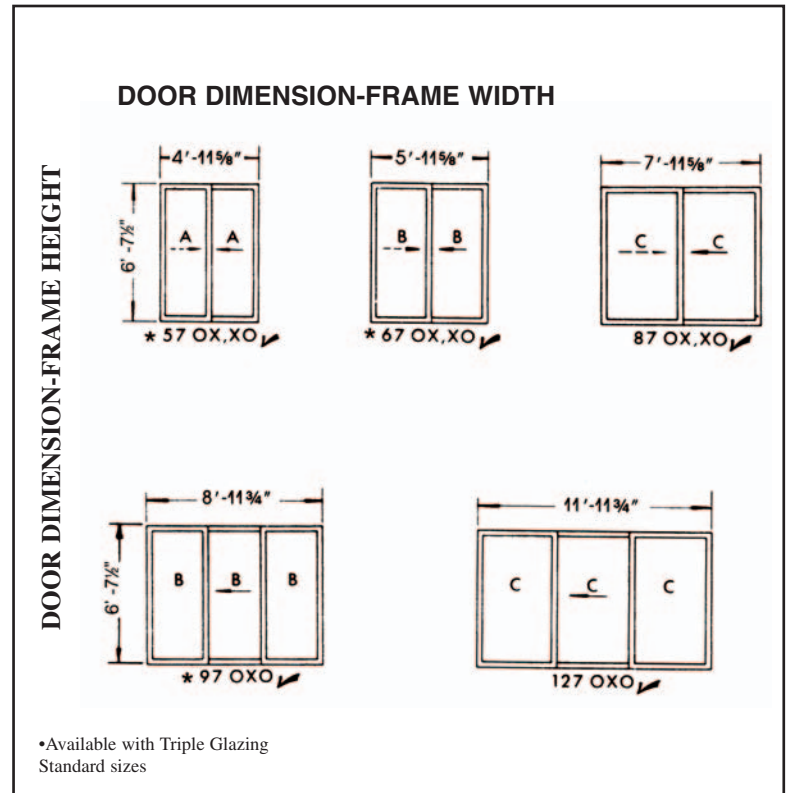
**ERECTION:** (by others) Thermal Guard erected in prepared openings according to manufacturer's recommendations and installation drawings. Frames must be securely fastened. After installation, all doors may be adjusted, if necessary, to insure efficient operation. Sealant furnished by others. Installation screws provided by manufacturer. Manufacturer assumes no liability for damage by the trades of final cleaning of aluminum.

**PERFORMANCE:** Series 1200 exceed the following specifications for sliding glass doors. Complies with forced entry resistance

Approved by Canadian Construction Materials Centre (CCMC). Meets specifications of CAN/CGSB-82.1-M89 (A2, B2, C3, D1, E3, F1)

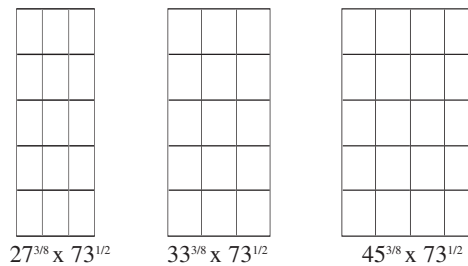
Thermo-Guard can be upgraded to A3, B3, C3, D1, E3, F1 at slightly higher cost.

## Types and Sizes (VIEWED FROM OUTSIDE)



## COLONIAL MUNTIN PATTERNS

Available with sealed insulating glass units



DISTRIBUTOR

# Sunview